

MATRIX

Matrix Chemical Industries Pvt Limited

Transforming Industries

with Innovative Chemistry
Polyurethane and
Unsaturated Polyester Resin



Matpol – High-Performance UPR Solutions

About Matpol

Matpol is the trusted brand of Unsaturated Polyester Resin (UPR) developed by Matrix Chemical Industries Pvt. Ltd., crafted for industries that demand strength, durability, and precision. With advanced formulation and rigorous quality control, Matpol delivers unmatched performance in a wide range of applications.



Why Choose Matpol?

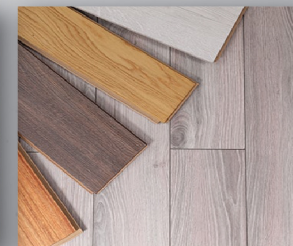
- **High Mechanical Strength**
Delivers excellent bonding and structural integrity for end products.
- **Superior Chemical Resistance**
Withstands harsh environments and corrosive elements.
- **Custom Formulations**
Tailored grades for hand lay-up, spray-up, casting, SMC, BMC, and more.
- **Consistent Quality**
Backed by cutting-edge manufacturing processes and in-house R&D.
- **Excellent Wet-Out and Curing**
Optimized for smooth processing and faster cycle times.

Applications

- **FRP Products** – Panels, tanks, pipes, gratings, domes
- **Automotive Parts** – Body panels, bumpers, moldings
- **Construction** – Decorative panels, bath-ware, corrugated sheets
- **Electrical Components** – SMC/BMC molded parts
- **Marine & Wind Energy** – Blades, boats, enclosures
- **Solid Surface Sheet** - Counter Tops

Grades

- **Hand Lay Up**
- **Pultrusion**
- **Plywood Coating**
- **Car Putty**
- **Vacuum Injection**
- **Button**
- **SMC/BMC**
- **Isophthalic**
- **Gel Coat**



Matpor – Rigid Polyurethane Foam Solutions

About Matpor Rigid PU Foam

Matpor Rigid Polyurethane (PU) Foam from Matrix Chemical Industries Pvt. Ltd. is engineered for high thermal insulation, excellent dimensional stability, and durability across extreme environments. Ideal for a wide range of insulation and structural applications, Matpor Rigid PU Foam delivers performance, efficiency, and sustainability.



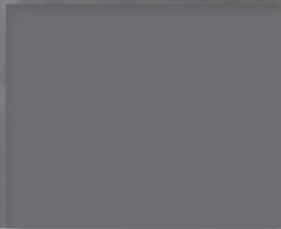
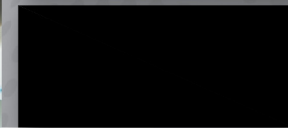
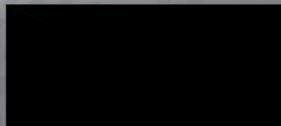
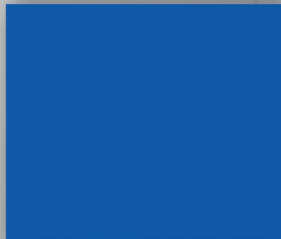
Key Features

- **Superior Thermal Insulation**
Low thermal conductivity for energy-saving performance.
- **Excellent Dimensional Stability**
Retains shape and structure under various thermal conditions.
- **Closed-Cell Structure**
Moisture resistance for long-term insulation effectiveness.
- **Fast Reactivity & Easy Processing**
Compatible with spray, pour, and injection applications.
- **Eco-Friendly Formulations**
Available in zero-ODP and low-GWP variants.

Applications

- **Refrigeration** – Refrigerators, cold storage panels, and freezers
- **Construction** – Roof & wall insulation, sandwich panels, pipe insulation
- **Appliances** – Geysers, water heaters, and HVAC systems
- **Transportation** – Insulated truck bodies and containers
- **Specialty Uses** – Discontinuous & continuous panel production
- **Spray Foam Systems**
- **Pour-in-Place Systems**
- **Block Foam / Slabstock**
- **Panel Lamination Systems**

Custom formulations are available based on specific application and equipment.



Matflex – Premium Flexible HR Foam Solutions

About Matflex

Matflex, the Flexible High Resilience (HR) Polyurethane Foam from Matrix Chemical Industries Pvt. Ltd., is engineered for superior comfort, support, and longevity. Designed to meet the demanding standards of the furniture, automotive, and bedding industries, Matflex delivers consistent performance with enhanced softness, bounce, and durability.



Key Features

- **High Resilience (HR) Performance**
Superior bounce-back and cushioning for long-term comfort.
- **Open Cell Structure**
Enhances airflow and breathability, reducing heat retention.
- **Durable & Long-Lasting**
Excellent fatigue resistance and shape retention.
- **Custom Density & Hardness Options**
Tailored grades for varied application needs.
- **Eco-Conscious Formulations**
Low-VOC and safe for indoor environments.

Applications

- **Furniture** – Cushions, sofas, chairs, and ergonomic seating
- **Bedding** – Mattresses, mattress toppers, and pillows
- **Automotive** – Car seats, headrests, and Motorbike Saddles
- **Office Seating** – Executive and task chairs
- **Specialty Foam** – Luxury upholstered products, cinema seating
- **Standard HR Foam** – Comfort + durability for everyday use
- **Super Soft HR Foam** – Plush feel with high air flow



Matflex VE – Viscoelastic Memory Foam

About Matflex VE

Matflex VE is our advanced Viscoelastic (Memory) Foam solution designed to deliver unmatched pressure relief, contouring comfort, and temperature-sensitive support. Developed by Matrix Chemical Industries Pvt. Ltd., Matflex VE is ideal for sleep systems, cushions, and specialty ergonomic applications where comfort meets technology.



MATRIX

Key Features

- **Slow Recovery with Pressure Relief**
Adapts to body shape and evenly distributes pressure.
- **Temperature Sensitive Response**
Softens with body heat for personalized comfort.
- **Excellent Motion Isolation**
Ideal for mattresses that reduce partner disturbance.
- **Open-Cell Technology**
Improved breathability and airflow to reduce heat build-up.
- **Customizable Density and ILD**
Available in a wide range of feel options for various needs.
- **Low-VOC & Safe**
Engineered for indoor use, compliant with global standards.

Applications

- **Mattresses** – Comfort layers in premium sleep systems
- **Pillows** – Contoured and pressure-relieving sleep pillows
- **Mattress Toppers** – Added comfort and plushness
- **Medical & Orthopedic Products**
 - Wheelchair cushions, hospital bedding
- **Furniture** – High-end sofas, ergonomic chairs, recliners
- **Travel & Comfort Accessories** – Neck pillows, seat pads
- **Matflex VE Classic** – Balanced contouring and support
- **Matflex VE SoftTouch** – Ultra-soft, luxurious feel
- **Matflex VE Cool**
 - Enhanced airflow and thermal regulation
- **Matflex VE Medical**
 - For pressure sore prevention & rehabilitation Custom formulations available for specific performance requirements.



Polymer Complex – High Pressure PU Dispensing Machines

About Polymer Complex

Polymer Complex is the premier brand of imported high-pressure polyurethane dispensing machines, brought to you by Matrix Chemical Industries Pvt. Ltd. These machines are precision-engineered to meet the demanding needs of the PU foam industry, providing unmatched consistency, efficiency, and durability in every shot.

Whether you're manufacturing rigid foams, flexible foams, or specialty PU products, Polymer Complex machines are built to deliver performance and precision.



Key Features

- **High-Pressure Mixing Head**
Superior mixing efficiency for perfect cell structure and product quality.
- **Accurate Metering System**
Precision gear pumps with high repeatability and control.
- **User-Friendly Control Interface**
Touch-screen PLC controls with automated cycle and fault diagnosis.
- **Robust Imported Build Quality**
Long-lasting performance with minimal maintenance downtime.
- **Multi-Component Capability**
Customizable for 2 to 6 component systems depending on application.
- **Energy Efficient**
Designed for optimal energy consumption and reduced waste.

Applications

- **Rigid PU Foams** – Refrigeration, sandwich panels, insulation blocks
- **Flexible Foams** – Automotive, furniture, bedding
- **Memory Foams** – Pillows, mattresses, ergonomic supports
- **Integral Skin Foams** – Armrests, steering wheels, handles
- **Casting Systems** – Filters, elastomers, and specialty PU parts



Matrix Chemical Industries Pvt Limited

Head Office: 502, Green Trust Tower, Jinnah Avenue, Blue Area, Islamabad 44000, Pakistan.

Lahore Office: 13 Agora (2nd Floor), Block A, Eden City, Near DHA Phase 8, Lahore Cantt. Pakistan

Karachi Office: Suit no 323, 3rd Floor, The Forum, G-20, Khayaban-e-Jami, Block-9, Clifton Karachi, Pakistan.

Lahore Plant: Matrix Chemical Industries, Near Zaib Palace, Hando Momin Pura Road, Lahore Pakistan.

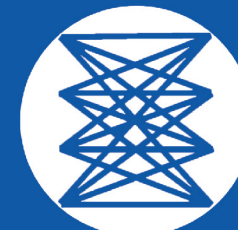
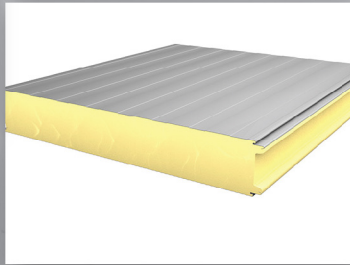
Website: www.matrixventures.com, info@matrixventures.com

Tel No. 0092-51-2813171-73

Tel: 0092-42-37135810-12

Tel: 0092-21-35361735-37

Tel: +92-042-36524071-74



MATRIX